



**Courtenay Street, Cheltenham**  
**£130 pppw**

All bills included! **LET AGREED**

This fabulous 5 bedroom student house boasts a large living room and open plan modern kitchen fitted out with white goods and high quality furniture. The property comes fully furnished and is finished to a high standard throughout. It also has three bathrooms with one of the bedrooms benefitting from an en suite. The property also comes with garden space.

50 week contract beginning July 2025!

\* There is a Gas and Electric cap on the bills to an agreed level to encourage responsible usage.

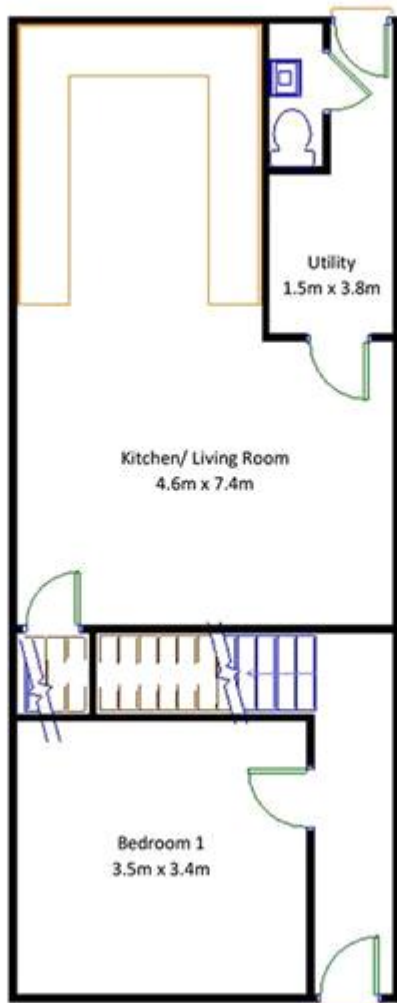
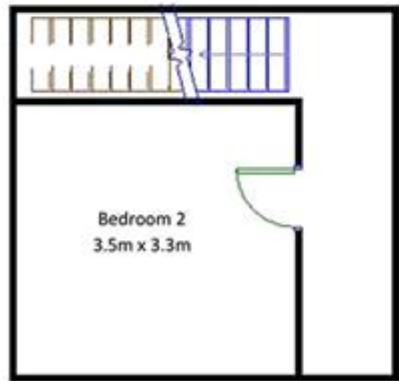
\*\* University Students are exempt from Council Tax but if a student leaves university they become liable for all charges.

Council Tax Band: B



Whilst every effort is made to ensure the accuracy of these details, it should be noted that the measurements are approximate only. Floorplans are for representation purposes only and prepared according to the RICS Code of Measuring Practice by our floorplan provider. Therefore, the layout of doors, windows and rooms are approximate and should be regarded as such by any prospective tenant.





Energy Efficiency Rating		
	Current	Potential
Very energy efficient - lower running costs		
(92-100) <b>A</b>		
(81-91) <b>B</b>		86
(69-80) <b>C</b>		
(55-68) <b>D</b>	61	
(39-54) <b>E</b>		
(21-38) <b>F</b>		
(1-20) <b>G</b>		
Not energy efficient - higher running costs		
<b>England &amp; Wales</b>	EU Directive 2002/91/EC	

The energy efficiency rating is a measure of the overall efficiency of a home. The higher the rating the more energy efficient the home is and the lower the fuel bills will be.